

Handwritten musical notation on a four-staff system. The notation includes chords and notes. Chords are circled in red: D7, G7, e, C#dim, Dm, F, G. The notes are primarily eighth and sixteenth notes. Vertical blue lines separate the measures.

Handwritten musical notation on a four-staff system. Chords are circled in red: C, C#dim, Dm, F, G. The notation includes notes and rests. Vertical blue lines separate the measures.

Handwritten musical notation on a four-staff system. Chords are circled in red: F#dim, F, F#dim, e/g, e/g, Am, Am/As, Ab/G, e/g, Am/F#.

Handwritten musical notation on a four-staff system. Chords are circled in red: D7, G7, Ab. Annotations include "sobe 1/2 Tom" with an arrow pointing to a measure, and "F#dim/As em G -> dp: transpor p, Db" with an arrow pointing to a measure. The notation includes notes and rests. Vertical blue lines separate the measures.

Handwritten musical notation on a five-line staff. The notation includes a treble clef, a key signature of one sharp (F#), and a common time signature (C). The first measure contains a treble clef and a sharp sign. The second measure is heavily scribbled over with blue ink. The third, fourth, and fifth measures contain handwritten musical notes and rests. Vertical blue lines separate the measures.

Handwritten musical notation on a five-line staff. The notation includes a treble clef, a key signature of one sharp (F#), and a common time signature (C). The first measure contains a treble clef and a sharp sign. The second measure contains a treble clef and a sharp sign. The third, fourth, and fifth measures contain handwritten musical notes and rests. Vertical blue lines separate the measures.

Handwritten musical notation on a five-line staff. The notation includes a treble clef, a key signature of one sharp (F#), and a common time signature (C). The first measure contains a treble clef and a sharp sign. The second measure contains a treble clef and a sharp sign. The third, fourth, and fifth measures contain handwritten musical notes and rests. Vertical blue lines separate the measures. Above the staff, several chords are circled in red: D7, G7, D7, G7, Dm, G, and G7.

Handwritten musical notation on a five-line staff. The notation includes a treble clef, a key signature of one sharp (F#), and a common time signature (C). The first measure contains a treble clef and a sharp sign. The second, third, and fourth measures contain handwritten musical notes and rests. Vertical blue lines separate the measures. Above the staff, several chords are circled in red: C/Bb, F/A, Ab?, and G7. To the right of the staff, the text "FINAL = 1ª VERSÃO ???" is written in a box.

♩ = 120

2006

9

JINGLE BELL ROCK

Versão B

Bobby Helms
Harmornização vocal: Dionísio Vila Maior

Introdução G7 C C#dim Dm F G7

1 1 1 1

♩ = 140

This system contains the first four staves of the musical score. Each staff begins with the word 'Introdução' and a tempo marking of '♩ = 140'. The first staff (1ª) has a treble clef and contains a melodic line. The second staff (2ª) has a treble clef and contains a similar melodic line. The third staff (3ª) has a treble clef and contains a bass line with some handwritten annotations, including circled '2ª' and '2ª' with arrows. The fourth staff (4ª) has a treble clef and contains a bass line. The system is divided into five measures by vertical bar lines, with chord changes indicated above the staff: G7, C, C#dim, Dm, F, and G7.

C C#dim Dm F G7

6 6 6 6

This system contains the next four staves of the musical score. Each staff begins with a measure number '6'. The first staff (1ª) has a treble clef and contains a melodic line. The second staff (2ª) has a treble clef and contains a bass line with handwritten annotations, including '2' and '3' with arrows. The third staff (3ª) has a treble clef and contains a bass line. The fourth staff (4ª) has a treble clef and contains a bass line. The system is divided into five measures by vertical bar lines, with chord changes indicated above the staff: C, C#dim, Dm, F, and G7.

18 17 20 21

C CMaj7 C6 C C6 C#dim Dm7 G7

1^a

2^a

3^a

4^a

22 23

Dm7 G7 Dm7 G7 Dm7 G7(5+)

14 14 14 14

1^a

2^a

3^a

4^a

27 25 26 27 28 29

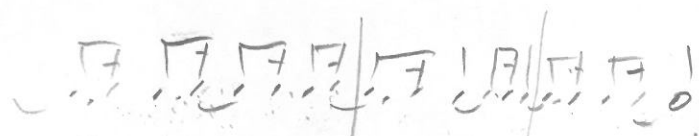
D7² G7 C C7 F B F#dim C/G C6 C

1^a
2^a
3^a
4^a

30 31 32 33

Am Am/A^b C/G Am/F# G G7

1^a
2^a
3^a
4^a



34

C CMaj7 C6 C C6 C/Bb A7

28 C

1^a

2^a

3^a

4^a

38

39

40

Fm6 Dm7 G7

32

1^a

2^a

3^a

4^a

41
C
Intermezzo
35

42
C#dim

43
Dm

F

44
G7

1^a

2^a
Intermezzo
35

3^a
Intermezzo
35

4^a
Intermezzo
35

45
C

46
C#dim

47
Dm

F

48
G7

1^a

2^a

3^a

4^a

Handwritten notes at the top of the page:
 58/65
 59/69
 60/68
 6d/68
 6#

Chord progression for the first system:
 C CMaj7 C6 C C#dim Dm7 G7

Vertical handwritten notes on the left side:
 Tcho
 Tcho
 Tcho

Musical score for the first system (measures 52-55). It consists of four staves (1^a, 2^a, 3^a, 4^a) with handwritten lyrics:
 1^a:
 2^a: TXU-BA TXU-BA Bell jin-go huck TXU-BA-RU Bell jin-go Bell
 3^a:
 4^a:
 There are various annotations including circled notes, a circled 'A' in measure 53, and a circled '22 x et in 40' in measure 54.

Chord progression for the second system:
 Dm7 G7 Dm7 G7 Dm7 G7(5+)

Handwritten note:
 Cl. compassi 34

Vertical handwritten notes on the left side:
 Tcho

Musical score for the second system (measures 56-59). It consists of four staves (1^a, 2^a, 3^a, 4^a) with handwritten lyrics:
 1^a:
 2^a:
 3^a:
 4^a:
 The score includes circled notes, a circled '1.' in measure 57, and a circled '1.' in measure 58.

A LAM

X

769
F/C

F 70

Fm6 71

1^a

2^a

3^a

4^a

+2

73

74

D7 Final G7 D7 G7 D7 G7

1^a

2^a

3^a

4^a

AT

76

~~AT~~

Dm

G

G7

66

1^a

2^a

3^a

4^a

AT

76

76

C

~~AT~~

C

C/B \flat

F/A

A \flat 7

G7

68

1^a

2^a

3^a

4^a