

# The impact of accessibility changes on the local development: a spatial approach

## Supplementary Material

### 1. Maps for control variables

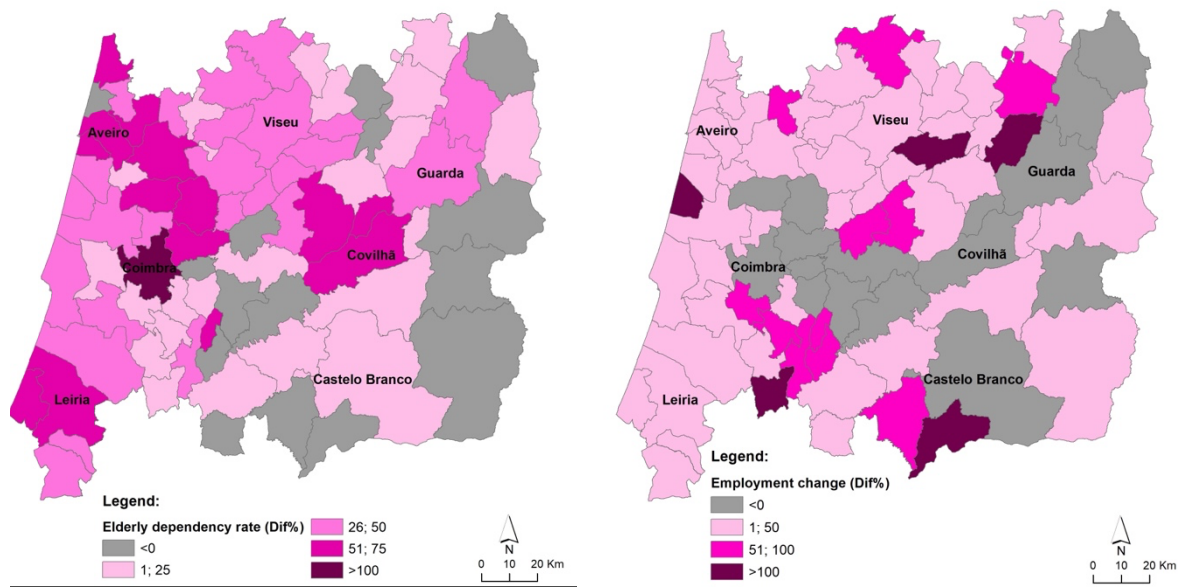


Figure S1: Changes in elderly dependence rate 2001-21 (left) and in employment 2001-21 (right).

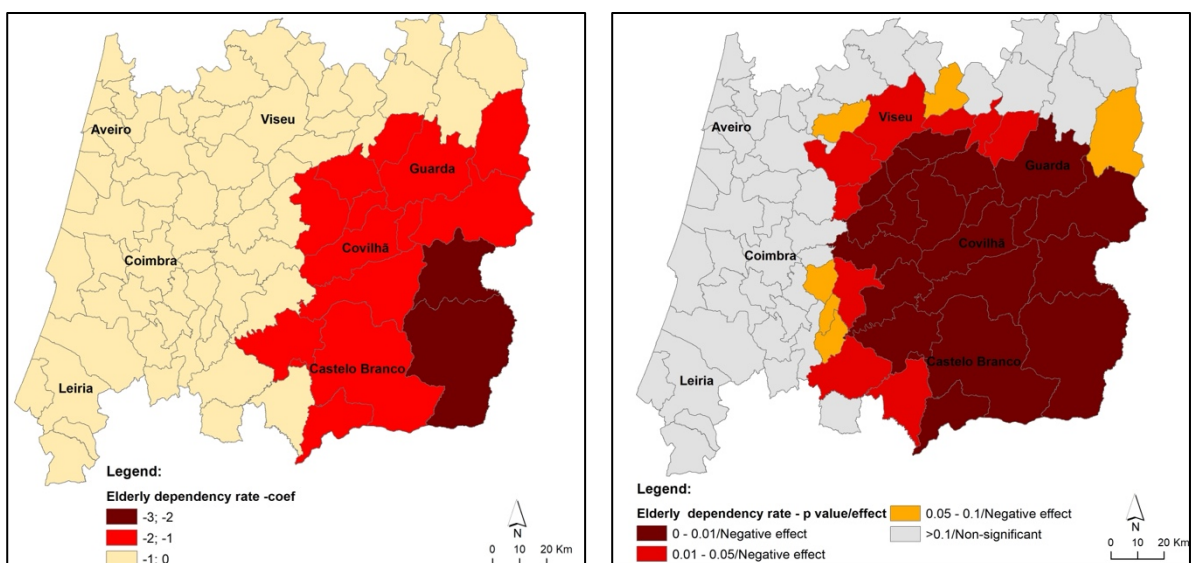


Figure S2: GWR results for elderly dependence rate – coefficients (left) and p-values (right).

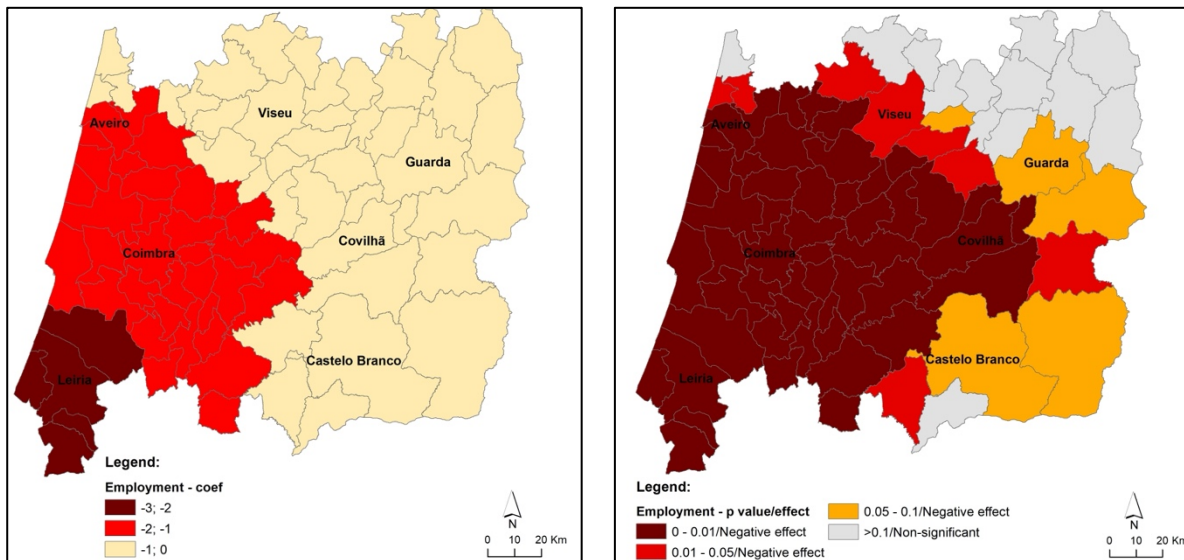
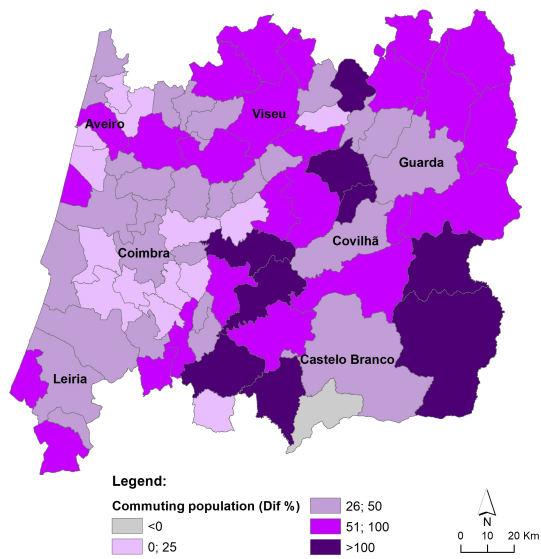


Figure S3: GWR results for employment – coefficients (left) and p-values (right).

## 2. Commuting



### Spatial autocorrelation report

Global Moran's I: 0,206

Pseudo p-value: 0,000 (0%)

Figure S4: Percent changes in commuting population 2001-21 (left) and spatial autocorrelation report (right).