

7th Biennial Conference
of the European Rural History Organisation [EURHO]

Rural History 2025

9 – 12 September Coimbra

Faculty of Arts and Humanities & Faculty of Economics,
University of Coimbra, Portugal



Rural History
2025 EURHO
CONFERENCE

7th Biennial Conference
of the European Rural History Organisation [EURHO]

Rural History 2025

9 – 12 September Coimbra

Faculty of Arts and Humanities & Faculty of Economics,
University of Coimbra, Portugal



EDITORS

Dulce Freire

Carlos Manuel Faísca

Alberto González Remuiñán

Ana Isabel Ribeiro

Leonardo Aboim Pires

Leonor Salguinho Ferreira

Liliana Pimentel

João Luís Fernandes

José Luís Barbosa

Ricardo Costeira da Silva

DESIGN

B2 Design

João Brandão

Joana Martins

Susana Brito

Carolina Ferreira

ISBN

978-989-36441-0-2

Coimbra, 2025

7th Biennial Conference
of the European Rural History Organisation [EURHO]

Rural History 2025

9 – 12 September Coimbra

Conference Program & Abstracts of all Sessions & Papers

Faculty of Arts and Humanities & Faculty of Economics,
University of Coimbra, Portugal



UIDB/00460/2025



UIDB/00311/2025





Morning light in Penafiel, 1920, Domingos Alvão, Lisbon Digital Newspaper Library

Greetings from the President of the EURHO

PRESIDENT OF EURHO **Prof. Dr. Enikő Rűsz- Fogarasi** Vice-dean of the Faculty of History and Philosophy, of the Babes-Bolyai University

Dear Conference Participants!

As I write these lines, I am filled with memories of our wonderful gathering in Uppsala three years ago. I still remember the evening walk through the quiet streets, deep in conversation with colleagues—moments like those remind us that this is much more than an academic meeting. It is truly astonishing how fast time passes. It has already been two years since the previous text-book was finalized, and we held our conference in Cluj-Napoca. And now, here we are again—another opportunity for those of us engaged in rural history to meet, to present our work, and to envision the future together.

The Rural History Conference has long been a cornerstone of EURHO's activity, hosted by numerous cities across Europe. This year, it has traveled from the eastern part of the continent to its westernmost region, bringing with it the spirit of exchange and discovery that defines our field.

Each gathering presents a remarkable opportunity for researchers from around the world to come together and share their work. But this event is far more than a traditional academic conference: it includes engaging workshops, thought-provoking keynotes, book launches, and invaluable opportunities for collaboration. While European scholars primarily attended the earlier conferences, we now take great joy in welcoming participants from other continents as well—an evolution that enriches our perspectives and deepens the impact of our work. These global exchanges have borne fruit in inspiring ways: regional associations dedicated to rural history are emerging in many parts of the world. Let us recall that the idea of the South American association was born in Cluj and has since launched its events—a wonderful witness to the generative power of our gatherings.

A special welcome goes to young researchers and first-time participants—your fresh perspectives are vital to the future of rural history. We are excited to see your work and to build new connections across generations and disciplines.

One of the great gifts of these conferences is the chance to encounter a new place, a new country, a new culture, a new landscape—a new rural history hinterland. Each edition leaves us not only with new knowledge but also with a renewed experience of rural societies and their rich diversity.

If we look back at the history of our meetings, it is clear that we are part of an increasing and evolving network. The number of participants has grown with each edition, drawing in more countries and more continents. At the same time, our intellectual lens has widened, embracing new disciplines, methodologies, and perspectives. Interdisciplinary and transdisciplinary approaches are increasingly present, allowing us to address complex questions with greater depth and scope.

This evolution is not only a success of our community but also a reflection of the urgent relevance of rural history in today's world. In a time marked by climate change, social fragmentation, and questions of sustainability, rural history offers not only a deeper understanding of the past but also tools for resilience in the present and future.

It is worth highlighting that participation in the conference also includes membership in EURHO. Every registered participant becomes part of our growing organization and gains access to the collective benefits of our shared work and vision.

The success of our network and events also depends greatly on the leadership of EURHO. I would like to express particular gratitude to Brigitte Semanek, who continues to be the heart of our organization—our connector, our communicator, and our problem solver. The updates and news she provides are of great value to us all, keeping us informed and united.

Let us also take a moment to thank the local organizing team here in Coimbra, whose vision and dedication made this event possible. Hosting a conference is no small task, and we are grateful for their generosity and professionalism.

Reading the program of the Coimbra conference, I am once again filled with anticipation. We are gathered in a city and a country of extraordinary cultural heritage, and we are about to embark on a program that promises new opportunities, new insights, and new collaborations in rural history.

Let us use this time not only to share research but to forge connections - across borders, disciplines, and generations. Together, we continue to shape not only a field of study, but a global intellectual community.

Finally, I believe in the wisdom of a traditional proverb that says:

“The land does not forget those who listen to it.”

Good luck, meaningful meetings and discussions!

Let's meet in Coimbra in September!

Cluj-Napoca, 23 June 2025

Welcome to Coimbra

Dulce Freire

CHAIR OF THE PORTUGUESE ORGANISING COMMITTEE Dulce Freire, University of Coimbra, Center for Interdisciplinary Studies, Faculty of Economics

What is rural? What is rural history? For the past 15 years, hundreds of researchers have regularly gathered at EURHO conferences, recognising that simple questions require more than simplistic answers. EURHO conferences have become landmark events in the History calendar and beyond. The growing relevance of these conferences is confirmed by the increasing number of participants who, every two years, bring different languages, territories, knowledge, experiences, sources and perspectives. Testimonies from the past have become a resource for exploring and explaining issues raised by different disciplines, thereby expanding the scope of questions, methodologies and analytical approaches to our heritage.

Around 500 researchers from 40 countries are expected to gather at the University of Coimbra in 2025. The programme consists of three plenary sessions and 124 parallel sessions. The plenary sessions will feature lectures by guest speakers Inês Amorim and Richard W. Hoyle. The issues they will discuss reflect their scientific curiosity, as well as the historiographical dynamics of their respective countries over the last few decades — a period during which research has shifted from a national focus to an increasingly international, interdisciplinary and comparative one. The third plenary session is a roundtable aimed at encouraging critical thinking on changes in the study of the rural past. Some argue that a revolution is underway, driven by innovations in genetics, artificial intelligence or image (re)creation. As we approach the 100-year anniversary of the *Annales movement's* inception, might history be about to take another turn?

The parallel sessions, some of which are split into two or three parts, demonstrate the vitality taking place, as well as showing how approaches are improving our understanding of rural communities and territories from the inside out. Relations with the outside world are also considered, but from a more rural perspective, whether through the nearest city, centralised state decisions, technological hegemony, destination countries for emigration, or the markets that sustain value chains. The programme includes classic themes in rural history, such as access to land, the unequal distribution of wealth, working conditions, revolts and violence. However, alongside landowners and peasants, there are now also more women with varied responsibilities, seasonal workers of different ethnicities, slaves in various locations, and immigrants and emigrants moving around. Further insights come from production: researchers have paid more attention to what is produced in rural areas than to what is consumed there. Despite papers addressing consumption or food scarcity, this remains the trend. However, other perspectives are emerging, covering topics such as the presence of animals (including insects and other pests), different crops and weeds, forests and timber, and water, as well as the changing environment. Many more avenues of innovation are lurking in the hundreds of papers under discussion during the four-day conference.

In addition to the 'Meet the Author' sessions, which focused on recently published books, the Coimbra conference introduced 'Meet the Project' sessions. This is because it is important to consider not only the results, but also the process. 'Meet the Project' provides an opportunity to shed more light on how the subjects are conceived and how methodologies are implemented. Specific doubts and challenges are highlighted, confirming the experimental nature inherent in all scientific fields.

The 2025 EURHO programme reflects the diversity of research trends that are converging on rural history. Still, as always, developing robust, diverse and plausible explanations of the past remains inextricably linked to access to historical sources, as well as the ability to connect dispersed, fragmented and local data. Like a lightning rod, rural history is firmly rooted in empirical exploration, yet it directs interpretative ambitions towards the universe.

As organisers, we are proud to be hosting this conference at the University of Coimbra, and we hope that you will all enjoy participating. We are sure the encounters and exchanges promise to be much more stimulating than anticipated!

Coimbra, 22 July 2025



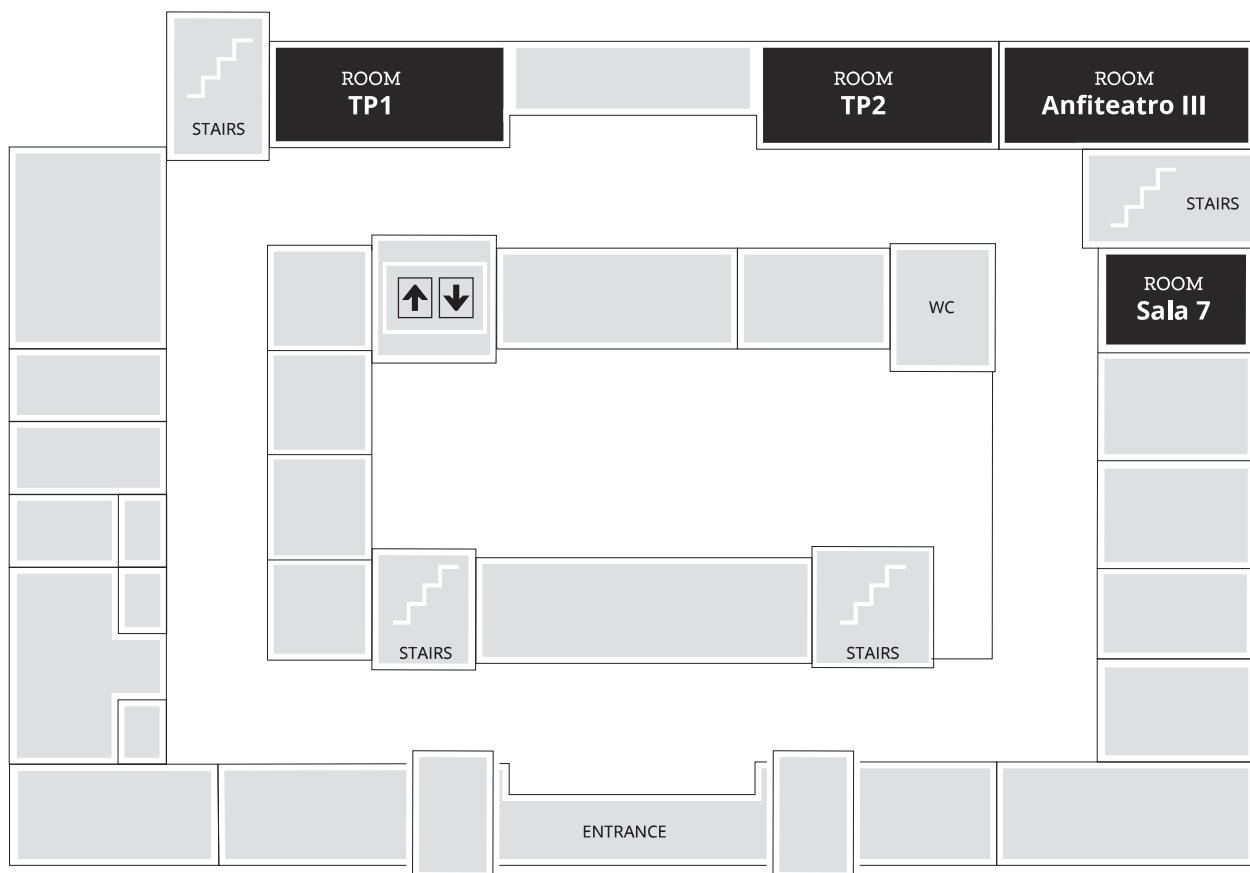
At the rustic window, in Autumn, 1913, Domingos Alvão, Lisbon Digital Newspaper Library

Practicalities	
Refreshments & lunch	<p>At both the Faculty of Arts and Humanities and the Faculty of Economics, the coffee breaks will be served close-by. Near the Faculty of Arts and Humanities and of the Faculty of Economics, participants will find several convenient lunch options (including vegan and vegetarian options). The University offers several canteens in the surrounding area of the faculties, in addition to cafeterias located within the faculties buildings. Other nearby options include restaurants and pastry shops serving light meals, soft drinks, coffee and tea, and a variety of Portuguese sweets.</p> <p>More detailed information can be found on the conference website.</p>
Internet	<p>Both at the Faculty of Arts and Humanities and the Faculty of Economics it is possible to use Eduroam.</p>
Welcome & Close cocktails	<p>The Conference Welcome Cocktail will take place on the terrace of the Museu Nacional Machado de Castro, at the end of the first day of the Conference, Tuesday, 9 September. The event will conclude with a Closing Cocktail on Friday, 12 September, at the Faculty of Economics, taking place in the faculty gardens.</p>
Excursions	<p>The study visits are scheduled to take place concurrently on the afternoon of Tuesday, September 11, with departures following lunch. Participation is restricted to those who registered in advance. Buses will leave from Rua Larga 2 (opposite the Chemistry Department of the University of Coimbra, close to the Faculty of Arts and Humanities) at 2:30 p.m. Visits to the city of Coimbra are on foot and start at 2:30 p.m. Participants will be informed of the meeting point for each visit in due course. Participants are requested to be punctual at the meeting points defined for the start of each visit.</p>

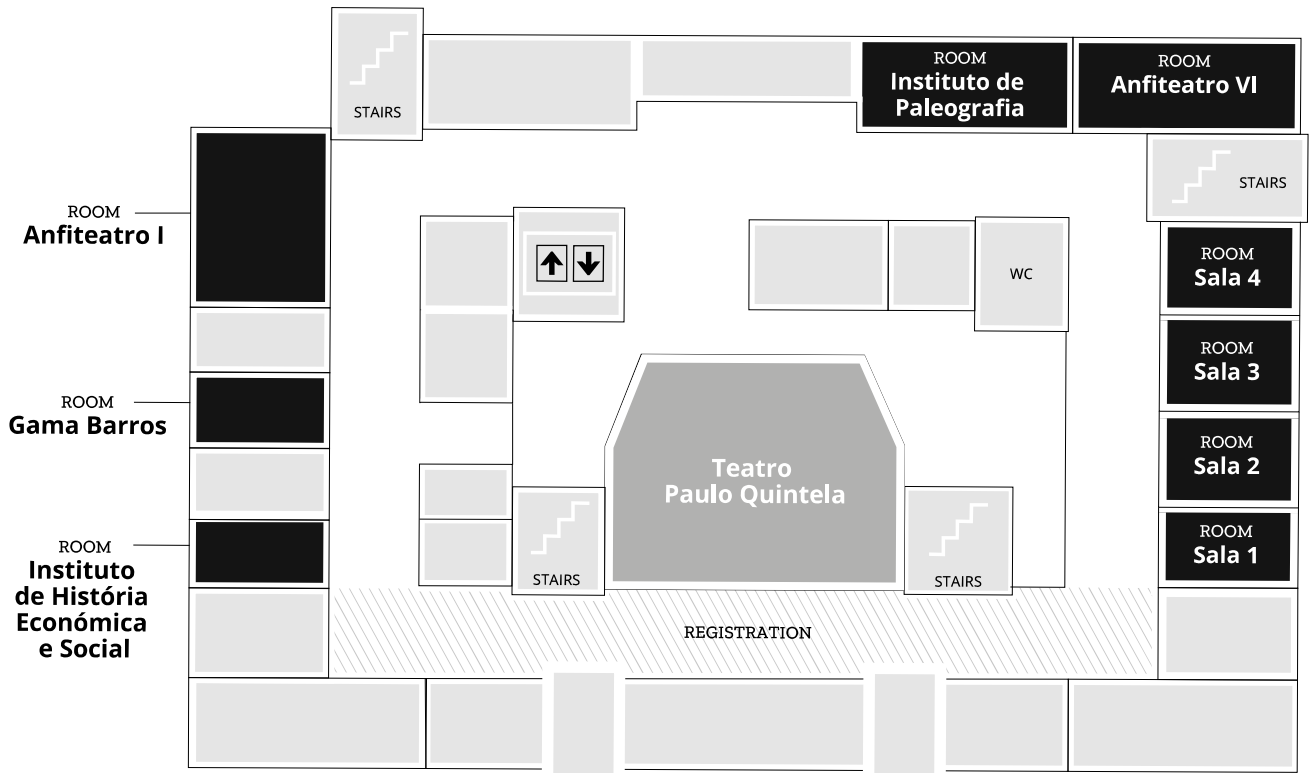
Faculty of Arts and Humanities

With over a century of existence, the Faculty of Arts and Humanities (Faculdade de Letras da Universidade de Coimbra, FLUC) is, within the University of Coimbra, the school of the Arts, Humanities, and Social Sciences. FLUC is one of the most prestigious educational institutions in Portugal, with a rich history, a strong international outlook, and a continuous commitment to innovation through concrete practices aimed at making it a point of reference. It is a vibrant and engaged faculty. To study at FLUC is to experience an intense cultural journey, to engage with a vast diversity of knowledge. Above all, it is a path that prepares students to face the challenges of the future.

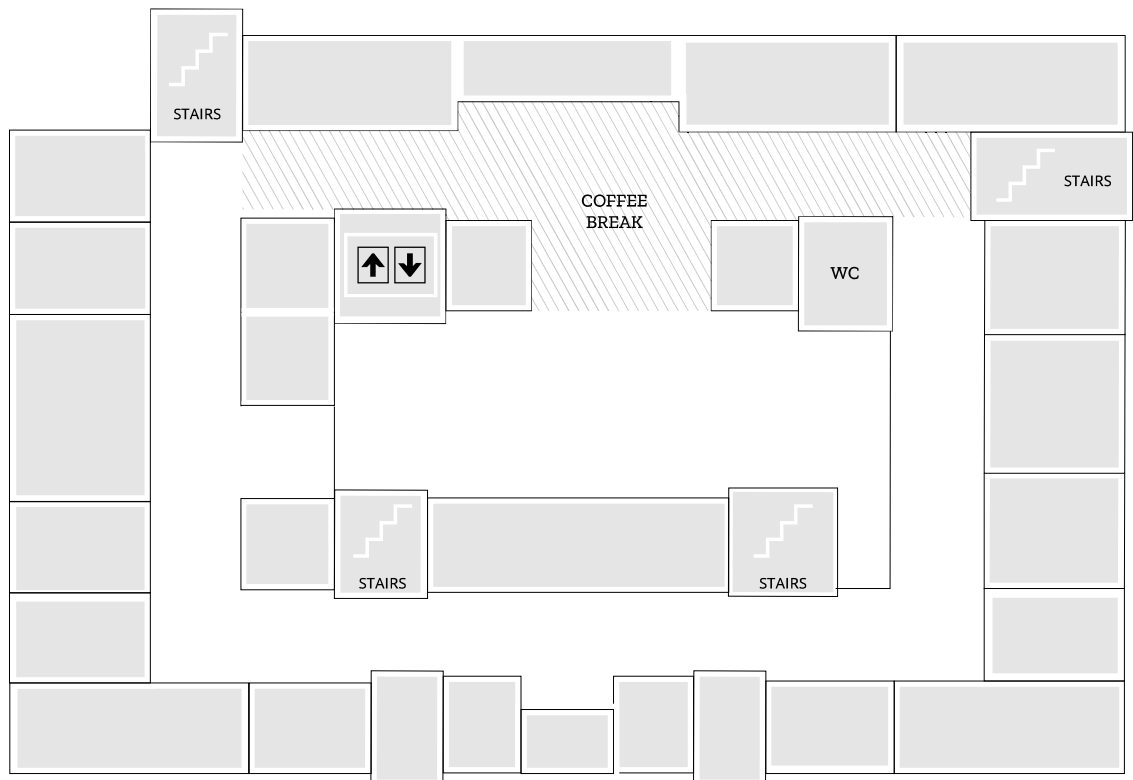
Floor 4



Floor 3



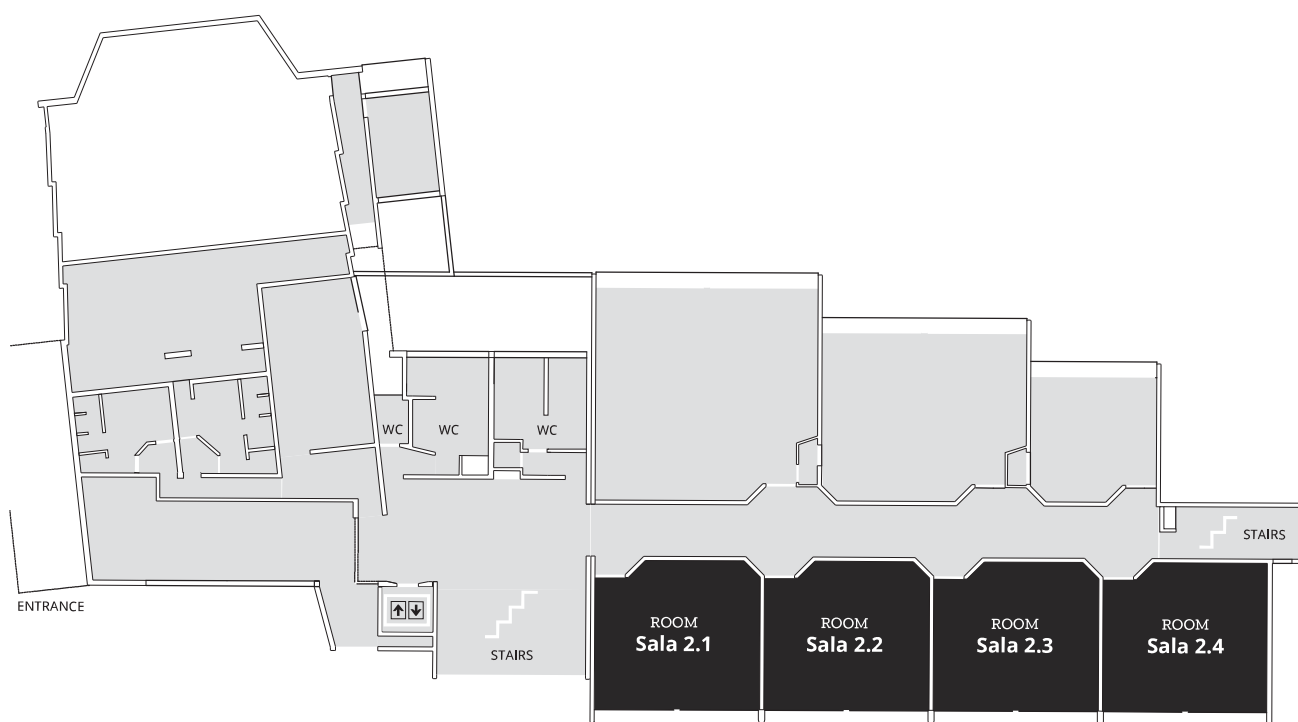
Floor 6



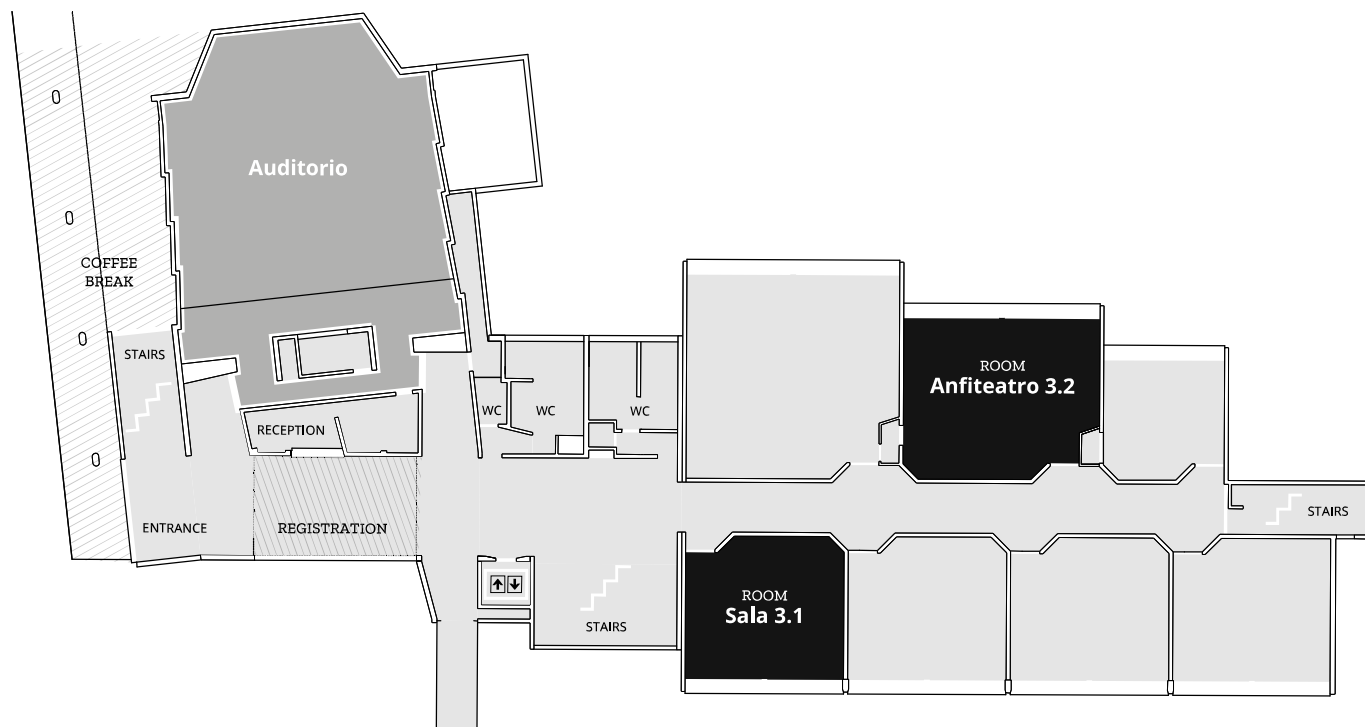
Faculty of Economics

Established in 1972, the Faculty of Economics (Faculdade de Economia da Universidade de Coimbra, FEUC) is one of the eight faculties that comprise the University of Coimbra. Today, a significant part of FEUC's academic offering focuses on postgraduate education. The faculty's facilities are in the Olivais area of the city and include spacious buildings for academic activities, open social spaces, and a sizeable landscaped area. With a student population of 2,627, supported by 129 academic staff and 30 administrative personnel, FEUC maintains an ideal size and effective logistics to ensure high-quality services within an academic environment marked by closeness and accessibility. Its highly qualified teaching staff, dedicated to their academic roles, is notably youthful, which encourages a relationship between students and lecturers that is both open and intellectually demanding.

Floor 2



Floor 3



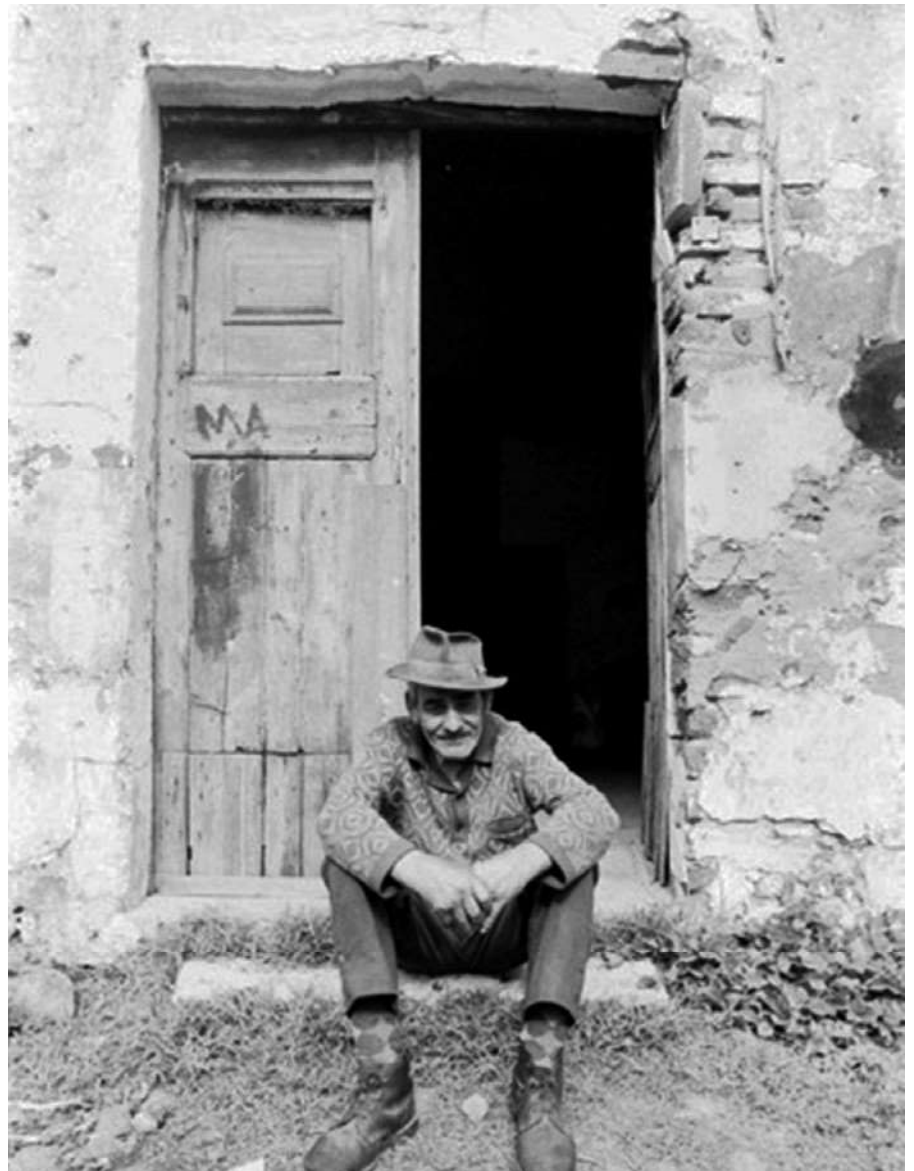
Floor 4



<p>Eurho</p>	<p>The EURHO is a non-profit organisation concerned to promote the study of all aspects of rural history in Europe and beyond. It organises, through its members, a bi-annual international conference, runs the website www.ruralhistory.eu and publishes the Rural History Newsletter. Membership is open to scientific institutions concerned with the furtherance of rural history and to individuals who attend the organisation's conferences. The EURHO has evolved from the recent initiatives in the field of international rural history such as the research network CORN (Comparative Rural History of the North-Sea Area), the rural network of the European Social Science History Conference and the ESF-COST Action PROGRESSORE (Programme for the Study of European Rural Societies). The EURHO has its legal seat at the institute of Rural History in St. Pölten, Austria which provides administrative services to the organization. The current officers are President Enikő Rűsz-Fogarasi, Vice-Presidents Dulce Freire and Zsuzsanna Varga; Secretary Brigitte Semanek; Treasurer Laurent Herment.</p>
<p>University of Coimbra</p>	<p>Founded in 1290, the University of Coimbra (UC) is one of the oldest universities in continuous operation worldwide. With over seven centuries of history, the UC has played a fundamental role in the production and dissemination of knowledge, integrating teaching, research, and community service. With approximately 30,000 students across eight faculties, the University promotes economic and social development, environmental protection, social justice, and an informed and responsible citizenship. Its mission is guided by scientific excellence, critical thinking, and cultural enrichment. In recognition of its historical, architectural, and educational significance, the University of Coimbra was designated a World Heritage Site by UNESCO in 2013, further affirming its status as a global reference in higher education.</p>
<p>Centre for Interdisciplinary Studies</p>	<p>The Centre for Interdisciplinary Studies (Centro de Estudos Interdisciplinares, CEIS20) is a research unit of the University of Coimbra, affiliated with the Institute for Interdisciplinary Research and funded since 1998 by the Portuguese Foundation for Science and Technology (FCT). Comprising eight research groups, the Centre's scientific output reflects both the individual dynamism of each group and the intersections of their activities, within a framework of interdisciplinary awareness. This interdisciplinary approach is understood as a methodological resource for the knowledge and theoretical innovation required by the Centre's research focus. In the field of advanced training and knowledge transfer, CEIS20 has offered, since 2011, the 3rd Cycle (Doctoral) Programme in Contemporary Studies. In addition to this, the Centre provides other forms of postgraduate education and offers training to early-career researchers, fostering advanced research practices. It also hosts a significant number of Portuguese and international postdoctoral researchers.</p>

Centre for the History of Society and Culture

The Centre for the History of Society and Culture (Centro de História da Sociedade e da Cultura, CHSC) is a Research and Development Unit accredited by the Portuguese Foundation for Science and Technology. It is physically and administratively based at the University of Coimbra and is affiliated with the Faculty of Arts and Humanities of the same institution. As the successor of the Centre for Historical Studies, created in the 1970s, the CHSC was formally established in 1976. Initially affiliated with the National Institute for Scientific Research (INIC), it later came under the auspices of the National Board for Scientific and Technological Research (JNICT) and, since 1997, has been integrated into the FCT. Over nearly five decades of existence, the CHSC has demonstrated a stable organisational model and made a significant contribution to the advancement of historical knowledge. The impact of its work is evident in its integration into international research networks, its role in hosting and/or developing innovative knowledge transfer projects, and in the publication of numerous scholarly works — most notably the *Revista de História da Sociedade e da Cultura*, which has been published continuously since 2001.



Rural worker resting at the door of a house, 1975, Inácio Ludgero, Mário Soares and Maria Barroso Foundation

Conference Organisers

Internacional Scientific Committee

Dulce Freire

Professor, University of Coimbra, Portugal, Chair of the International Scientific Committee and the Portuguese Organising Committee

Carlos Manuel Faísca

Professor, University of Coimbra, Portugal, Chair of the International Scientific Committee and the Portuguese Organising Committee

Aleksander Panjek

Professor, University of Primorska, Slovenia

Álvaro Garrido

Professor, University of Coimbra, Portugal

Anna Maria Stagno

Professor, University of Genoa, Italy

Enikő Rűsz-Fogarasi

Professor, Babeş-Bolyai University, Cluj- Napoca, Romania

Ernst Langthaler

Professor, Johannes Kepler Universität, Linz, Austria

Friederike Scholten

PhD, Freelance, Germany

Gesine Gerhard

Professor, University of the Pacific, United States of America

Gérard Béaur

Professor, French National Centre for Scientific Research, France

Juan Pan-Montojo

Professor, Autonomous University of Madrid, Spain

Karen Sayer

Professor, Leeds Trinity University, United Kingdom

Margarida Sobral Neto

Emeritus professor, University of Coimbra, Portugal

Patrick Svensson

Professor, Swedish University of Agricultural Sciences, Sweden

Pedro C. Carvalho

Professor University of Coimbra, Portugal

Peter A. Coclanis

Professor, University of North Carolina at Chapel Hill, United States of America

Peter Moser

Director, Archives of Rural History, Bern, Switzerland

Tim Soens

Professor, University of Antwerp, Belgium

Zsuzsanna Varga

Professor, Eötvös Loránd University of Budapest, Hungary

Local Organising Committee

Dulce Freire

Center for Interdisciplinary Studies & Faculty of Economics

Carlos Manuel Faísca

Center for Interdisciplinary Studies, Faculty of Arts and Humanities

Alberto González Remuiñán

Center for Interdisciplinary Studies

Ana Isabel Ribeiro

Center for Interdisciplinary Studies & Faculty of Arts and Humanities

Leonardo Aboim Pires

Center for Interdisciplinary Studies

Leonor Salguinho Ferreira

Center for the History of Society and Culture & Faculty of Arts and Humanities

Liliana Pimentel

Center for Business and Economics Research & Faculty of Economics

João Luís Fernandes

Center for Interdisciplinary Studies & Faculty of Arts and Humanities

José Luís Barbosa

Center for the History of Society and Culture & Faculty of Arts and Humanities

Ricardo Costeira da Silva

Center for Interdisciplinary Studies & Faculty of Arts and Humanities

Secretarial Support

Mónica Lourenço

Joana Sobral

9 September FACULTY OF ARTS AND HUMANITIES	10 September FACULTY OF ARTS AND HUMANITIES	11 September FACULTY OF ARTS AND HUMANITIES	12 September FACULTY OF ECONOMICS
8h15 – 9h00 OPEN SESSION	8h30 – 10h30 PARALLEL SESSIONS 3	8h30 – 10h30 PARALLEL SESSIONS 7	8h30 – 10h30 PARALLEL SESSIONS 9
9h00 – 11h00 EURHO Board Meeting / PARALLEL SESSIONS 1	10h30 – 11h00 COFFEE BREAK	10h30 – 11h00 COFFEE BREAK	10h30 – 11h00 COFFEE BREAK
11h00 – 11h30 COFFEE BREAK	11h00 – 13h00 PARALLEL SESSIONS 4	11h00 – 13h00 PARALLEL SESSIONS 8	11h00 – 13h00 PARALLEL SESSIONS 10
11h30 – 13h00 ROUNDTABLE			
13h00 – 14h30 LUNCH BREAK	13h00 – 14h30 LUNCH BREAK	13h00 – 14h30 LUNCH BREAK	13h00 – 14h30 LUNCH BREAK
14h30 – 16h30 PARALLEL SESSIONS 2	14h30 – 16h30 PARALLEL SESSIONS 5	14h30 – 18h00 PARALLEL VISITS	14h30 – 16h30 PARALLEL SESSIONS 11
16h30 – 17h00 COFFEE BREAK	16h30 – 17h00 COFFEE BREAK	1. Lower Mondego River	16h30 – 17h00 COFFEE BREAK
17h00 – 17h45 EURHO General Assembly	17h00 – 19h00 PARALLEL SESSIONS 6	2. From Seed to Plate 3. Changing Rural Territories 4. Building the city of Coimbra 5. Itinerary of Coimbra's House-Museums 6. History of the University of Coimbra	17h00 – 18h00 Keynote 2 Richard W. Hoyle, University of Reading
18h00 – 19h00 Keynote 1 Inês Amorim, University of Porto			18h00 – 19h00 CONFERENCE CLOSE SESSION
19h30 - 21h00 CONFERENCE WELCOME COCKTAIL Terrace of the Machado de Castro Museum			19h00 – 20h00 CONFERENCE CLOSING COCKTAIL Gardens of the Faculty of Economics

Special Conference Events

Welcome and closing cocktail

On the evening of the 9th of September, the Conference Welcome Cocktail will be held on the terrace of the Museu Nacional Machado de Castro. The Conference Closing Cocktail will take place on the afternoon of the 12th of September and will be served at the Faculty of Economics.

Excursions

Study Visit 1 Lower Mondego River Area and Salt Museum

In addition to being the longest of the Portuguese rivers (that is, having their source and mouth in Portugal), the Mondego can be understood as a symbolic border between the north and south of Mainland Portugal. Furthermore, it was a historical route for transport and exchange of natural products between two geomorphologically distinct areas and two complementary geoeconomies: from the lowlands and seascapes west of Coimbra, to the eastern rougher soils and environments of the agro-forestry-pastoral complex of mountain landscapes. This study trip will travel through the Lower Mondego region, between Coimbra and Figueira da Foz, in which will be discussed its historical and contemporary dynamics, covering topics such as human landscapes, sustainability, floods, hydraulic works, agriculture, the planting of species such as rice or tourism. Finally, nearby the Atlantic, at the river mouth, with a visit to the museum centre and surrounding area of *salines*, the group will be presented with the topic of salt production.

Study Visit 2 From Seed to Plate: The Europe's Northernmost rice-growing region

This fieldtrip is focused on the Estarreja area (Aveiro region) that is the northernmost location where rice has been cultivated in Portugal and is also one of the oldest. The earliest records of rice production date back to the early 19th century, with the crop gaining socio-economic significance, as in other parts of the country, particularly from the early 20th century onwards. However, due to less favourable climatic conditions and a highly fragmented landownership structure, local rice cultivation declined when the "green revolution" brought significant productivity increases further south. The lower yields of local landraces and a lack of capital largely contributed to the near extinction of Estarreja's rice sector. Currently, the Estarreja municipality is working to revitalize this heritage, primarily as a means of territorial promotion. This visit will explore the entire rice production chain, from agricultural cultivation to industrial processing and final consumption, including a visit to a former rice milling factory that has been converted into a museum.

Study Visit 3 Changing Rural Territories: Long-term Perspectives on Heritage and Innovation

This visit explores the transformations in rural territories around the Serra de Sicó area (slightly south of the city of Coimbra) over the past 2000 years. Departing from the town of Condeixa-a-Nova, the itinerary follows Roman vestiges embedded in landscapes, infrastructures, artefacts, and cultural values. While these remains highlight the centrality of these territories during

	<p>the Roman Empire, they also reveal the profound changes that shaped the centuries following its decline. The itinerary includes a visit to the Fernando Namora House-Museum. As a physician, writer, and painter, Fernando Namora observed and documented rural daily life in the second half of the 20th century, a period marked by structural transformations in Portugal's economy and society. So, this visit offers a glimpse into the social and economic changes that have taken place in rural areas over the long term.</p>
<p><i>Study Visit 4</i> Building the city of Coimbra: The Roman marks through time</p>	<p>In Coimbra there is one of the best preserved Roman cryptoporticus in the Iberian Peninsula. After being crucial to building the Roman city, this monumental structure now serves as the foundation of the Machado de Castro National Museum. The walking tour includes a descent into the cryptoporticus, an exploration of the museum's collections, and a visit to other areas associated with the construction of this urban space.</p>
<p><i>Study Visit 5</i> Between the rural and the urban: Itinerary of Coimbra's House-Museums</p>	<p>The itinerary includes visits to the homes of three important intellectuals in 20th century Portuguese literature and science. The tour begins at the house museum of Miguel Torga, an essential writer for understanding the soul of rural Portugal. The next stop is the Bissaya Barreto House Museum, an impressive architectural and artistic ensemble that also reveals the dimension of this doctor's social and scientific work. The visit ends at the former home of João Cochofel (poet, writer, essayist and literary critic), which was a privileged meeting place for the neo-realist movement in Coimbra and is now a cultural and artistic space of the Municipality of Coimbra. All in all, these visits offer plural visions of the city and its cultural debates during the decades between dictatorship and democracy in Portugal.</p>
<p><i>Study Visit 6</i> University of Coimbra: Education, science and the city</p>	<p>Founded in 1290, the University of Coimbra, classified by UNESCO as a World Heritage Site in 2014, has influenced the organisation and development of the city in several ways. This visit explores the impacts of the university's infrastructure on urban space, from the first buildings still preserved to the new constructions of the mid-20th century, which forced the destruction of medieval neighbourhoods. This walking itinerary through the history of the university includes the impacts of the Enlightenment reforms on science and teaching, visible in buildings as the first laboratories, the astronomical observatory and the botanical garden.</p>

Keynote Speakers

The keynote speakers at this edition will be **Inês Amorim** (University of Porto, Portugal) and **Richard W. Hoyle** (University of Reading, United Kingdom).

KEYNOTE 1

Inês Amorim

Inês Amorim is a Full Professor at the Faculty of Arts of the University of Porto, Portugal, a lecturer in the Department of History, Politics and International Studies, and Director of the master's degree in History and Heritage. She has been the Scientific Coordinator of CITCEM – Transdisciplinary Research Center for Culture, Space and Memory since March 2023. She has participated in different interdisciplinary projects and collaborates with researchers from different scientific areas (Anthropology, Biology, Economics, Geography and Information Science), in teams formed by researchers from different universities, such as England, Germany, France, Canada, Norway, Spain, Italy, United States, Ireland, Denmark, India, Timor, among others. Her main interests are focused on economic and social history, environmental history, climate history, credit, consumption, poverty and well-being, as well as the area of maritime heritage.

Farmer agency in early modern times: individual and collective efforts

Agricultural agency is a term imported from current agricultural services policy, encompassing several objectives: land access, crop selection and forest management, credit and loan programs, disaster management, and agricultural market management, among others. The perspective is to assess the capacity of agricultural producers to make decisions about their livelihoods and environmental stewardship. This concept focuses on farmers ability to select, act, and effect change, whether individually or through collective efforts.

Applying this perspective to the Portuguese Modern Period may risk becoming anachronistic, but we consider it a challenge in reviewing current historiography and gathering indicators about decision-making within agricultural communities, whatever their nature. The main constraints stem from the nature of the information sources (primary sources and their producers) and locating potential capacity-building opportunities within the interstices of the powers that controlled land and agricultural resources. The approach is easier to carry out if we conduct a top-down analysis, particularly of monastic institutions, which deal with local farmers, but it is still possible to map locations where opportunities are observed for farmers to select and implement changes (bottom-up).

KEYNOTE 2

Richard Hoyle

Richard Hoyle is Visiting Professor of Economic History at the University of Reading (UK) where he was Professor of Rural History 2000-14. He was latterly Professor of Local and Regional History at the University of London, 2014-16. He served as editor of *Agricultural History Review* 1999-2020 and is general editor of the Boydell Studies in Rural History (<https://boydellandbrewer.com/books/series/boydell-studies-in-rural-history/>). He was one of the team that organised the first Rural History Conference in Brighton in 2010 and served as the founding president of EURHO, 2010-15. He manages the on-line library LIBRAL <https://boydellandbrewer.com/books/series/boydell-studies-in-rural-history/>). In April 2025 he was elected President of the British Agricultural History Society.

As an agricultural and rural historian, he has ranged widely. Recent publications include a new account of the British agricultural revolution in the *Oxford Handbook of Agricultural History* (ed.) Whayne (2024) and an essay on the uses of accounts on late eighteenth-century agriculture in a volume on accounts edited by Joly and D'Onofrio in the Boydell series (2025). Much recent work is directed towards aspects of the grain trade, but he continues to be active in earlier periods and his next book will be *Landlords and tenants in Tawney's century; tenurial change in England, 1540-1640*. www.rwhoyle.org.uk

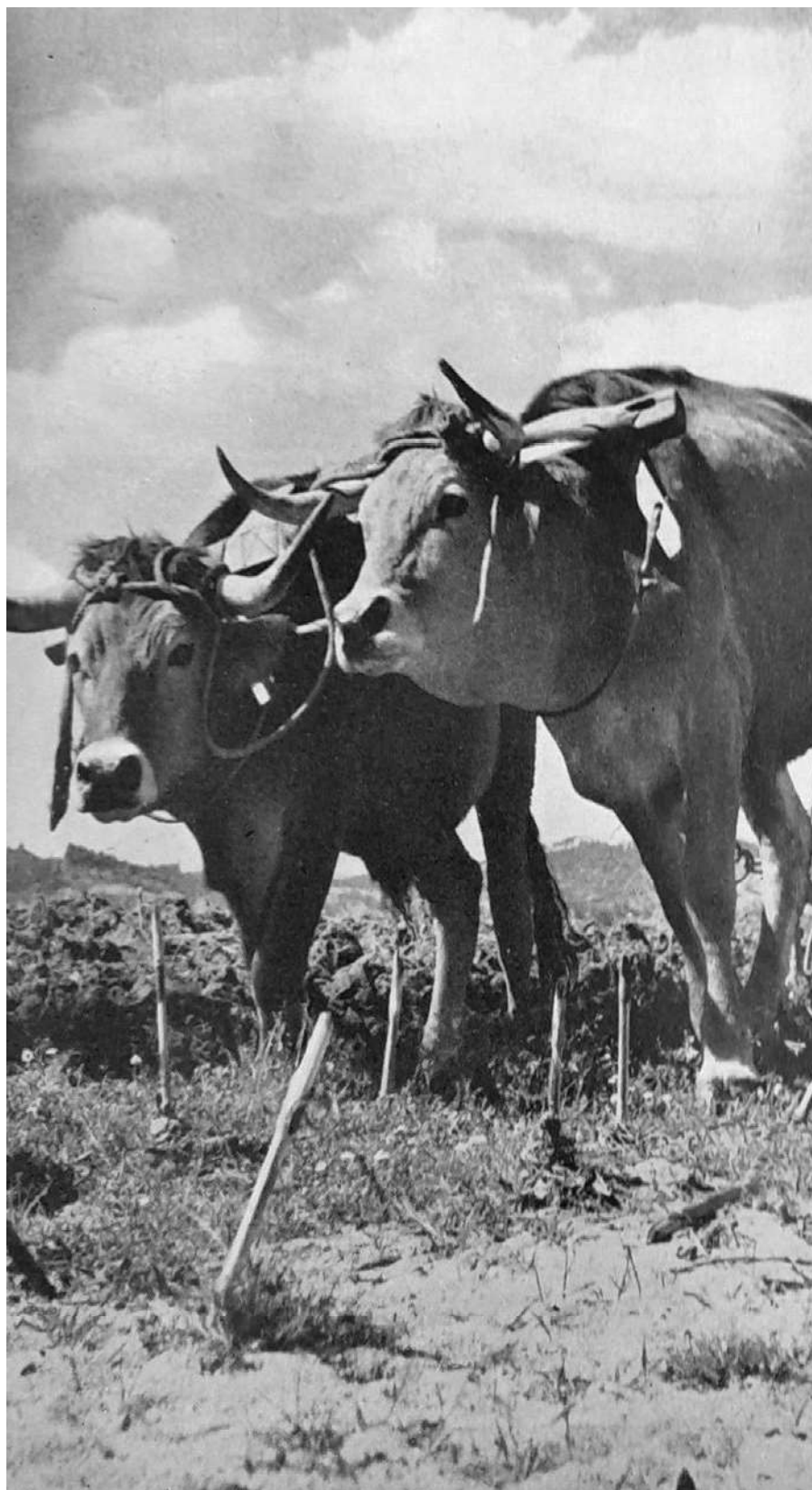
**Arthur Young,
Sir George Sinclair and
the agricultural origins
of quantitative
social science**

This plenary is about information and description. It explains the way in which the gathering of information about British agriculture became increasingly sophisticated and quantitative in character in the thirty or so years after 1780. At the end of the eighteenth century, English society was largely without statistics. There were no national population figures nor a clear sense of whether population was growing. Most parishes did not know how large they were. No agricultural data was collected. What was available was customs data, and contemporaries watched the balance of trade in agricultural products with anxiety but without really understanding what the figures meant.

Our account starts with Arthur Young (1741-1820) – the best known of the late eighteenth-century British agronomists and a natural quantifier, but his methods, especially as seen in his published agricultural Tours – appear slapdash. And yet Young has been claimed as the pioneer of sampling and we have largely overlooked how he used his data. He was certainly an early adopter of the circulated questionnaire, designed to gather structured and consistent evidence of conditions.

Sir John Sinclair (1754-1835) launched a very different approach to data gathering by sending Scottish clergy a questionnaire about their parishes. Their returns formed the basis of the Statistical Survey of Scotland. Sinclair intended to extend this approach to England, but had to be satisfied with the largely qualitative General Views sponsored by the Board of Agriculture. But these also espoused the idea of structured data in a consistent framework.

We shall show how, in the hands of the younger generation of contributors – individuals who are now little known – the General Views increasingly drew on fieldwork and became data rich and highly quantitative, employing a recognizable social science methodology.



Tilling the land, 1953, Varela Pècurto, National Library of Portugal

Tuesday, 9th September 2025

Faculty of Arts and Humanities | 9h00 – 11h00 | **PARALLEL SESSIONS 1**

SESSION	PAPER 1	PAPER 2	PAPER 3	PAPER 4	PAPER 5	ROOM
<p>1.1. Lands and natural spaces of the royal estate: categories, agencies, and rights in the Iberian world (15th-18th centuries)</p> <p>María Carolina Jurado, Manuel Bastias Saavedra</p>	<p>1.1.1. The Royal Wood Factory and the centralisation of the exploitation of the Leiria Pine Forest (1723-1807)</p> <p>Diogo Moreno</p>	<p>1.1.2. Royal authority over colonial grasslands: contested claims during the 16th century viceroyalty of Peru</p> <p>Carolina Jurado</p>	<p>1.1.3. Royal domain and fief in Early Modern Sicily: the case of Camopetro</p> <p>Giacomo Pace Gravina</p>	<p>1.1.4. Ownership and responsibility: the Spanish Crown's claim to vacant inheritances (Italy and Spanish America, 17th-18th centuries)</p> <p>Alessandro Buono</p>	<p>1.1.5. The construction of the (theoretical) eminent domain of the Crowns of Castile and Portugal over woodlands for shipbuilding in the Iberian Peninsula (XV-XVIIIth centuries)</p> <p>Koldo Trapaga-Monchet</p>	Sala 1, 3rd floor
<p>1.2. Quality over time and across regions: evidence from the olive oil sector</p> <p>Ramon Ramon-Muñoz, Silvia A. Conca Messina, Ana Duarte Rodrigues</p>	<p>1.2.1. A matter of quality: harvesting olives in the southern Italian countryside, late 18th - early 19th centuries</p> <p>Gaia Bruno</p>	<p>1.2.2. Rescuing traditional olive cultivars in Portugal for a more sustainable future</p> <p>Patricia Trindade Monteiro, Ana Duarte Rodrigues</p>	<p>1.2.3. Between divergence and convergence: regional patterns of technological change in Spain's olive oil industry since the mid-19th century</p> <p>Ramon Ramon-Muñoz</p>	<p>1.2.4. Conquering quality: the transformation of the Italian olive oil sector from the 19th century to the present day</p> <p>Rita d'Errico, Silvia A. Conca Messina</p>		TP2, 4th floor
<p>1.3. Old and new configurations of rural Brazil: capital, social movements and education</p> <p>Maria Cristina dos Santos, Luiz Bezerra, Paulino José Orso</p>	<p>1.3.1. Agribusiness and education in Brazil</p> <p>Paulino José Orso</p>	<p>1.3.2. The struggle for education in the Brazilian countryside: from pedagogical ruralism to the Escola da Terra Program</p> <p>Luiz Bezerra Neto</p>	<p>1.3.3. The socio-historical and economic composition of rural Brazil: the protagonism of subjects in the struggle for land and education</p> <p>Maria Cristina dos Santos</p>			TP1, 4th floor
<p>1.4. Mutual construction and intertwining between community and hacienda in the Hispanic-Lusitanian worlds, 18th-20th centuries (Americas, Asia and the Caribbean) 1</p> <p>Eric Léonard, Antonio Escobar Ohmstede, Marta Martín Gabaldón</p>	<p>1.4.1. An overview of water conflicts between villages and haciendas in the central valleys of Oaxaca, Mexico, 19th to 20th century</p> <p>Olivia P. Topete Pozas</p>	<p>1.4.2. Pueblos, haciendas and ranchos between the river valleys and the monte in Northwestern New Spain: spaces, resources, and boundaries in the Mayo river basin</p> <p>Cynthia Radding</p>	<p>1.4.3. An unique system of transmission of property rights over land in a Brazilian civil parish during the 19th century</p> <p>Manoela Pedroza</p>	<p>1.4.4. Haciendas and indigenous communities in the dispute and collaboration in the management of water and territory: the valleys of Chira and Piura from the 19th to the 20th century</p> <p>Alejandro Diez</p>	<p>1.4.5. Trajectories of communalization of haciendas in the Sierra of Piura, 18th to 20th century</p> <p>Alejandro Diez</p>	Anfiteatro III, 4th floor
<p>1.5. Agricultural tractors, social change and rural communities in 20th century 1</p> <p>Bruno Esperante</p>	<p>1.5.1. Calibrating Interaction: tractors and draft animals in Swiss agriculture, 1900–1960</p> <p>Juri Auderset</p>	<p>1.5.2. Tractorization and social change: a comparative analysis of agricultural mechanization in Turkey and Finland</p> <p>Derya Nizam Bilgiç, Aapo Jumppanen, Timo Suutari</p>	<p>1.5.3. Agricultural tractors and social change in rural communities. Galicia, Spain 1950-2000</p> <p>Bruno Esperante</p>	<p>1.5.4. Street protests and festive parades: the multifunctional use of tractors in Belgium since the 1950s</p> <p>Yves Segers</p>		Sala 4, 3rd floor

SESSION	PAPER 1	PAPER 2	PAPER 3	PAPER 4	PAPER 5	ROOM
<p>1.6. Exploring demographic patterns, epidemics and mortality crises in the rural communities of Late Medieval Northwestern Mediterranean</p> <p>Pere Benito i Monclús, Albert Reixach Sala</p>	<p>1.6.1. A peste, fame et bello libera nos, domine: mapping epidemics and famines in Late Medieval Aragón</p> <p>María Luz Rodrigo, Lidia C. Allué-Andrés</p>	<p>1.6.2. Exploring demographic patterns and epidemic cycles in late medieval Crown of Aragón: will series from rural communities in Catalonia (1348-1530). The case of the small town of Sant Boi de Llobregat, near Barcelona (1371-1500)</p> <p>Pere Benito i Monclús, Alberto Barber Blasco</p>	<p>1.6.3. Writing wills in agropastoral communities of the Catalan Pyrenees after the Black Death: a source for demography and economic and social history</p> <p>Joan Busoms-Cabanas</p>	<p>1.6.4. Exploring demographic patterns amid epidemic cycles in late medieval Crown of Aragón: will series from rural communities in Catalonia (1348-1530)</p> <p>Albert Reixach Sala</p>		Sala 3, 3rd floor
<p>1.7. Underemployment, seasonality and mobility in rural worlds (18th-20th centuries) 1</p> <p>Niccolò Mignemi, Luca Andreoni, Francesco Chiapparino</p>	<p>1.7.1. Coping with underemployment: migration, pluriactivity, and gender in Eastern Finland during the 19th century</p> <p>Petri Talvitie</p>	<p>1.7.2. Refusing the factory: peasant attitudes to industrial work (Ivry - France 1800-1880)</p> <p>Fabrice Boudjaaba</p>	<p>1.7.3. Seasonality, mobility and the evolution of the incomes of day laborers and agricultural servants in Transylvania (1895-1914)</p> <p>Iosif Marin Balog</p>	<p>1.7.4. Performances, mobilities, underemployment in Italian agriculture during the 1930s</p> <p>Luca Andreoni, Francesco Chiapparino</p>		Sala 7, 4th floor
<p>1.8. The time around 1525 from a gender and household economic perspective</p> <p>Janine Maegraith, Siglinde Clementi</p>	<p>1.8.1. Women's economic position in Southern Germany at the time of the Peasant Revolt: An analysis of taxable wealth</p> <p>Victoria Gierok</p>	<p>1.8.2. The feudal system and the inheritance rights of women in the Tyrolean nobility of the early modern period</p> <p>Siglinde Clementi</p>	<p>1.8.3. A male affair? Women's wealth and their economic participation in the household in southern Tyrol around 1525</p> <p>Janine Maegraith</p>	<p>1.8.4. Property and gender in rural areas: continuities and particularities in Tyrolean Court Practice around 1525</p> <p>Margareth Lanzinger</p>		Sala 2, 3rd floor
<p>1.9. Timber floatations in Europe: between continuity and discontinuity 1</p> <p>Claudio Lorenzini, Katia Occhi</p>	<p>1.9.1. The coming forth of the modern capitalist timber industry around the upper - stream of the river Mures</p> <p>Zsombor Attila Gal</p>	<p>1.9.2. Timber floatations on the river Mureş/Maros in the 18th and 19th centuries</p> <p>Robert-Miklos Nagy</p>	<p>1.9.3. Timber floatation in Yonne</p> <p>Dimitri Langoureau, Nicolas Jacob</p>			Anfiteatro VI, 3rd floor
<p>1.10. Continuities rather than novelties? Technologies, imaginaries and practices in the ecologisation of agriculture 1</p> <p>Romain Blancaneaux, Julie Hermesse, Nicolas Loodts</p>	<p>1.10.1. Socio-ecological trajectories and historical roots of hedgerows in Europe: what role and prospects for hedgerows in the materialization of the tension between modernization and ecologization narratives?</p> <p>Gianni Malica</p>	<p>1.10.2. The future is organic: narratives of organic farming in a 1978 TV documentary</p> <p>Walpurga Friedl</p>	<p>1.10.3. The role of the animal in a sustainable food system: an exploration of a contested issue in the Netherlands 1950-2000</p> <p>Amber Striekwold</p>			Instituto de Paleografia, 3rd floor
<p>1.11. Rural economic inequalities in the Central and Eastern Europe in the late Middle Ages and Early Modern period 1</p> <p>Radosław Poniat</p>	<p>1.11.1. Economic inequalities among nobility in the Grand Duchy of Lithuania in the 16-18th centuries</p> <p>Marzena Liedke, Radosław Poniat, Piotr Guzowski</p>	<p>1.11.2. Inequality among the nobility of the Polish-Lithuanian Commonwealth in the late 18th century</p> <p>Joanna Hryniewicka, Dawid Kowalik</p>	<p>1.11.3. Between rural roots and urban wealth: economic inequalities among the Polish-Lithuanian nobility in the 17th-18th centuries</p> <p>Ewa Kaźmierczyk, Monika Kozłowska-Szyc</p>	<p>1.11.4. Peasant or townspeople wealth? Economic inequality among residents of agrarian towns in the Grand Duchy of Lithuania in the 18th century</p> <p>Agnieszka Zoch</p>	<p>1.11.5. Wealthy peasants and poor nobles: inequality and overlapping affluence in early modern Slovenia</p> <p>Aleksander Panjek</p>	Anfiteatro I, 3rd floor

Pastoralism and ploughing or fishing and salt production? A mixed economy on the new medieval coast of Laguna de Aveiro

Maria Rosário Bastos Portuguese Open University, Portugal

It is used to be notice that Portugal and the lagoon of Aveiro was born at the same time. In fact, when D. Afonso Henriques claimed (successfully) the king title near his cousin Afonso VII and the Pope Alexandre III, a new coastline was draft south of the Porto and north of the Coimbra geographic parallels. Between 10th and 11th centuries, a sandy spit began to grow and progressively closed a large gulf that would become Aveiro's Lagoon. The formation of a coastline protected from direct action of sea waves, facilitated fishing and, above all, the production and exploitation of sea salt (medieval "white gold"). Meanwhile, on the sandy spit grazed animals from the Grijó monastery to which this territory belonged. Over time, the demographic growth characteristic of the medieval warm period was combined with the definitive pacification of the area, which meant that the overpopulation north of the River Douro moved to this rich coastal nook. The Inquirições demonstrate the necessity to cultivate new agricultural land to satisfy the increasing demand for foodstuffs. Consequently, the region, which is now encompassed by the Aveiro lagoon, reached its apogee between fishing, salt, grazing and agriculture, around the 13th century.

Human settlement and coastal fishing in the mainland Portuguese medieval coast

Olegário Pereira NOVA University of Lisbon, Portugal

Medieval human communities established in the mainland Portuguese littoral where scarcer than the ones located inland. The sea was seen as a dangerous place and populations have maintained a certain distance from the exposed coastal areas. Nevertheless, fishing communities thrived along the coast, where besides the dedication to such economic activity, have also complemented it through the exploitation of other resources. Such fishing communities seem to have always been in the vicinity of landscapes considered safer places in terms of exposure to the sea, but with the necessary connections to easily access it. This is evident in coastal zones with the presence of lagoonal and estuarine areas, once it was on these types of coastlines that people found relative safety from natural and anthropogenic dangers, as well as greater abundance in terms of resources (both aquatic and terrain). However, such paradigms started to change with the overseas expansion. In this presentation the medieval county charters granted by the crown between 12th and 16th centuries will be observed. The purpose is to understand people's movement towards coastal areas and analyze the relations between the sea resources and the coastal landscapes chosen by fisherman's communities to be established.

"Musealising" the rural and the fishing medieval material and intangible heritage

Sérgio Lira Green Lines Institute for Sustainable Development, Portugal

A musealisation is an interpretation. The further away a cultural object, the harder it is to be honest about this simple fact: visitors tend to believe that what is in a museum is "the truth". The more remote (geographically, culturally or chronologically) the object of a museum, the stronger the tendency to accept that interpretation and, as such, the harder the task of the museum. In common sense assertions, medieval times are often referred to in terms that could not be further from scientific knowledge – the "dark ages" being