

On the Viscosity and other Properties of Poly(Ethylene Glycol) 600

M. F. V. Pereira^{1,2}, T. V. M. Santos¹, H. M. N. T. Avelino^{1,2}, F.J. P. Caetano^{1,3}, F.J.V. Santos,^{1,4} J. M. N. A. Fareleira¹¹ Centro de Química Estrutural, Instituto Superior Técnico, Universidade de Lisboa, Portugal² Instituto Superior de Engenharia de Lisboa, IPL, Portugal³ Departamento de Ciências e Tecnologia, Universidade Aberta, Lisboa, Portugal⁴ Faculdade de Ciências, Universidade de Lisboa, Portugal

Ultimate Goal

To apply methods for correlation and prediction of the viscosity of pure liquids (PEGs) and mixtures (PEG + other fluids) for sustainable processes.

What do we need?

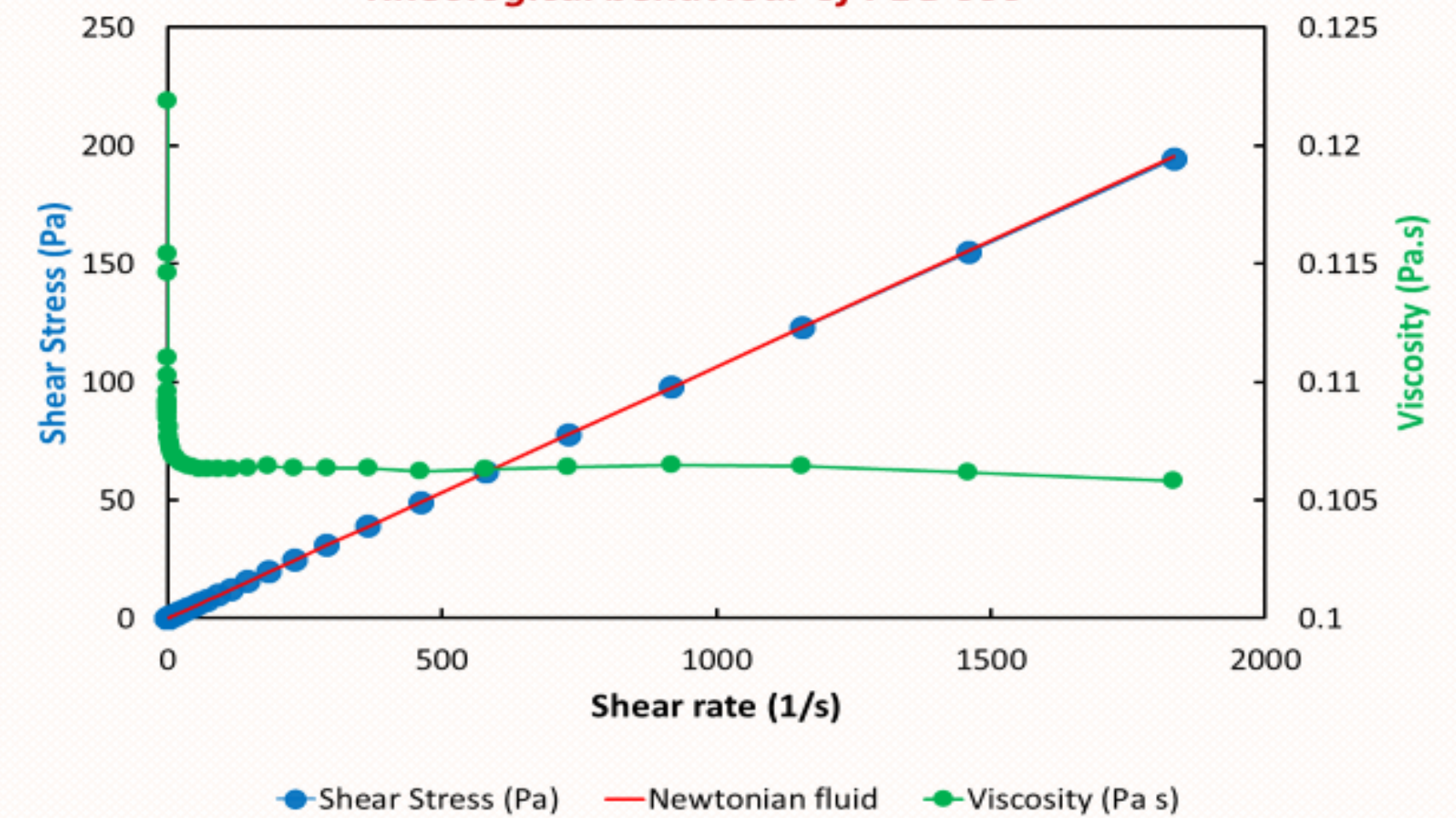
Characterise the fluids: Viscosity
Rheological Behaviour
Density
Surface Tension
Molecular Weight



1

Shear dependent viscosity

Rheological behaviour of PEG 600



5

Previous studies

The effect of supercritical fluid (SCF) addition on the viscosity of PEGs:

- PEG400-CO₂ – Simultaneous Viscosity and Density Measurement of Supercritical CO₂-Saturated PEG 400; *Journal of Supercritical Fluids* **13**, 177-185 (1998).
 - PEG200-CO₂ – Viscosity of Poly(ethyleneglycol) 200 [PEG 200] Saturated with Supercritical Carbon Dioxide; *Journal of Supercritical Fluids* **128**, 300-307 (2017)
- Share Link: <https://authors.elsevier.com/a/1VWRn3BwpnW68>

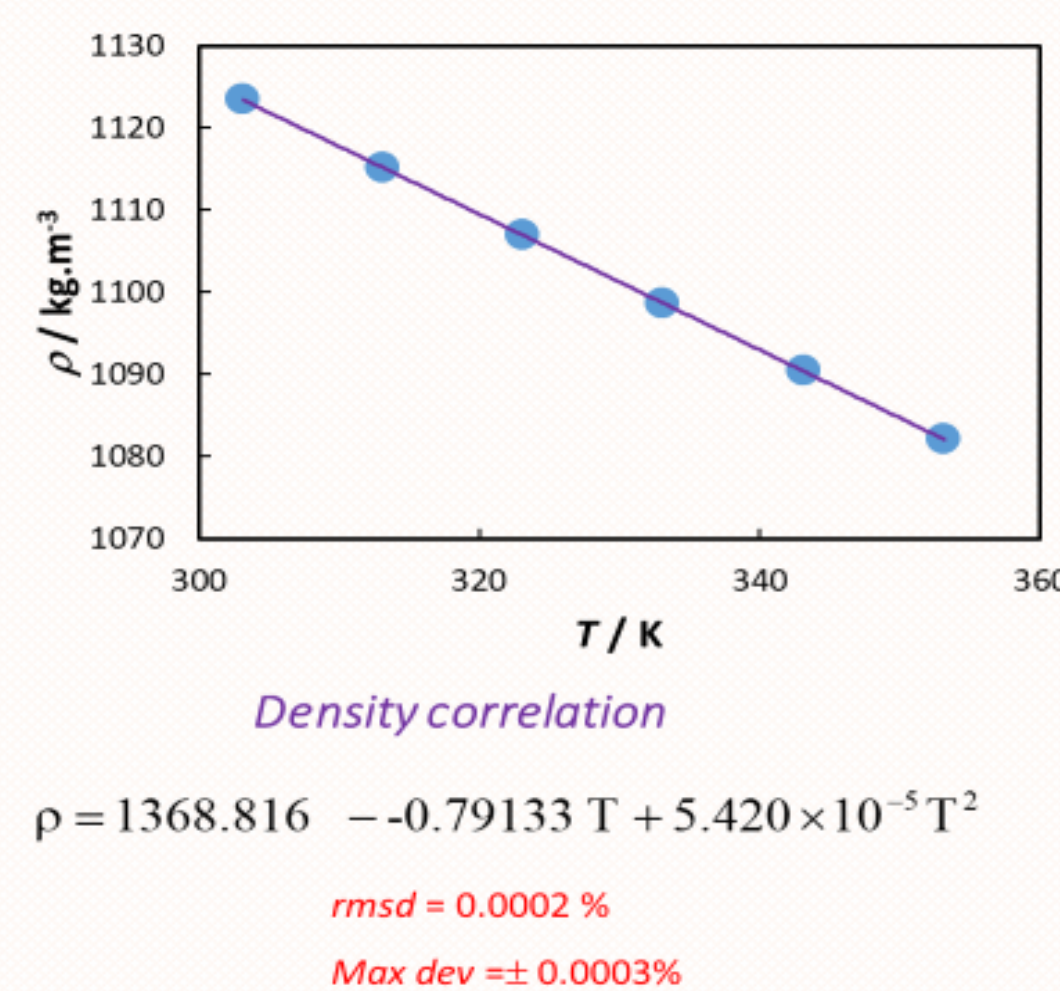
Outcomes

- Viscosity reduction of PEG 200 and PEG 400 due to CO₂ addition is directly dependent on the quantity of dissolved CO₂ in the polymer.
- The highest viscosity reduction observed was 79% (PEG 200) and 89% (PEG 400), at 313 K.
- The viscosity results show an initial sharp viscosity reduction, up to the critical pressure, followed by a nearly invariant zone.

2

Density of PEG 600

U-tube densimeter measurements



rmsd = 0.0002 %
Max dev = ± 0.0003%

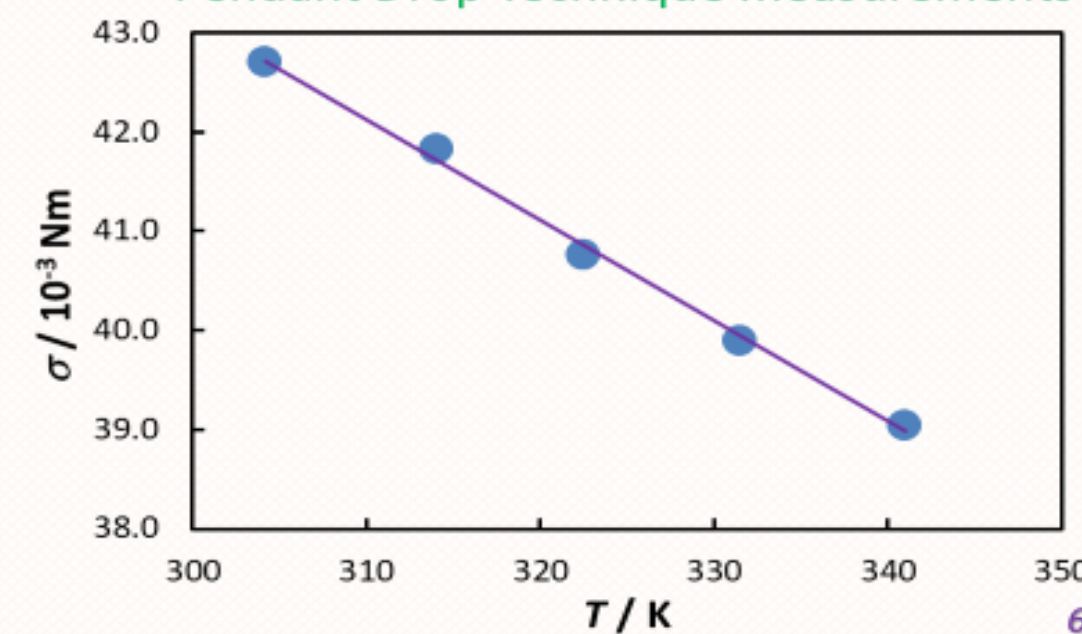
Surface Tension of PEG 600

Surface Tension correlation

$$\sigma = 73.6417 - 0.1016 T$$

rmsd = 0.18 %
Max dev = ± 0.26%

Pendant Drop Technique measurements



6

New measurements PEG 600 at atmospheric pressure

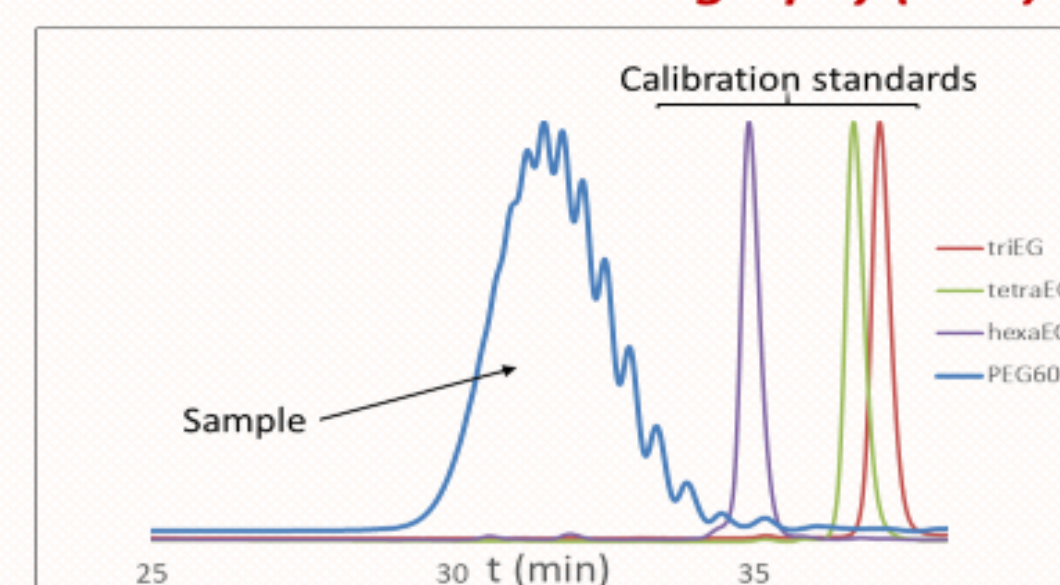
(Lot from Sigma Aldrich)

Property	Method	T range / K
Viscosity	Vibrating-wire	303-353
Viscosity	Ubbelohde capillary	303-333
Density	Vibrating-tube	303-353
Surface tension	Pendant Drop	303-340
Molecular weight	GPC; Mark-Houwink equation	323
Rheological behaviour	Parallel Plate Rheometer	303

3

Calculating Molecular Weights

Size Exclusion Chromatography (GPC)



M_n – Number-average molar mass = 593 g/mol
M_w – Mass-average molar mass = 636 g/mol
M_w / M_n = 1.07

Work in progress (PEG600 from Alfa Aesar): Molecular weight vs. fluid properties

M_n – Number-average molar mass = 594 g/mol
M_w – Mass-average molar mass = 625 g/mol
M_w / M_n = 1.05

Mark-Houwink equation

Calculation based in M. P. J. Dohmen et al. *J. Chem. Eng. Data* 2008, 53, 63–65

$$[\eta] = K M^\alpha$$

[η] - Intrinsic viscosity

M – molecular mass

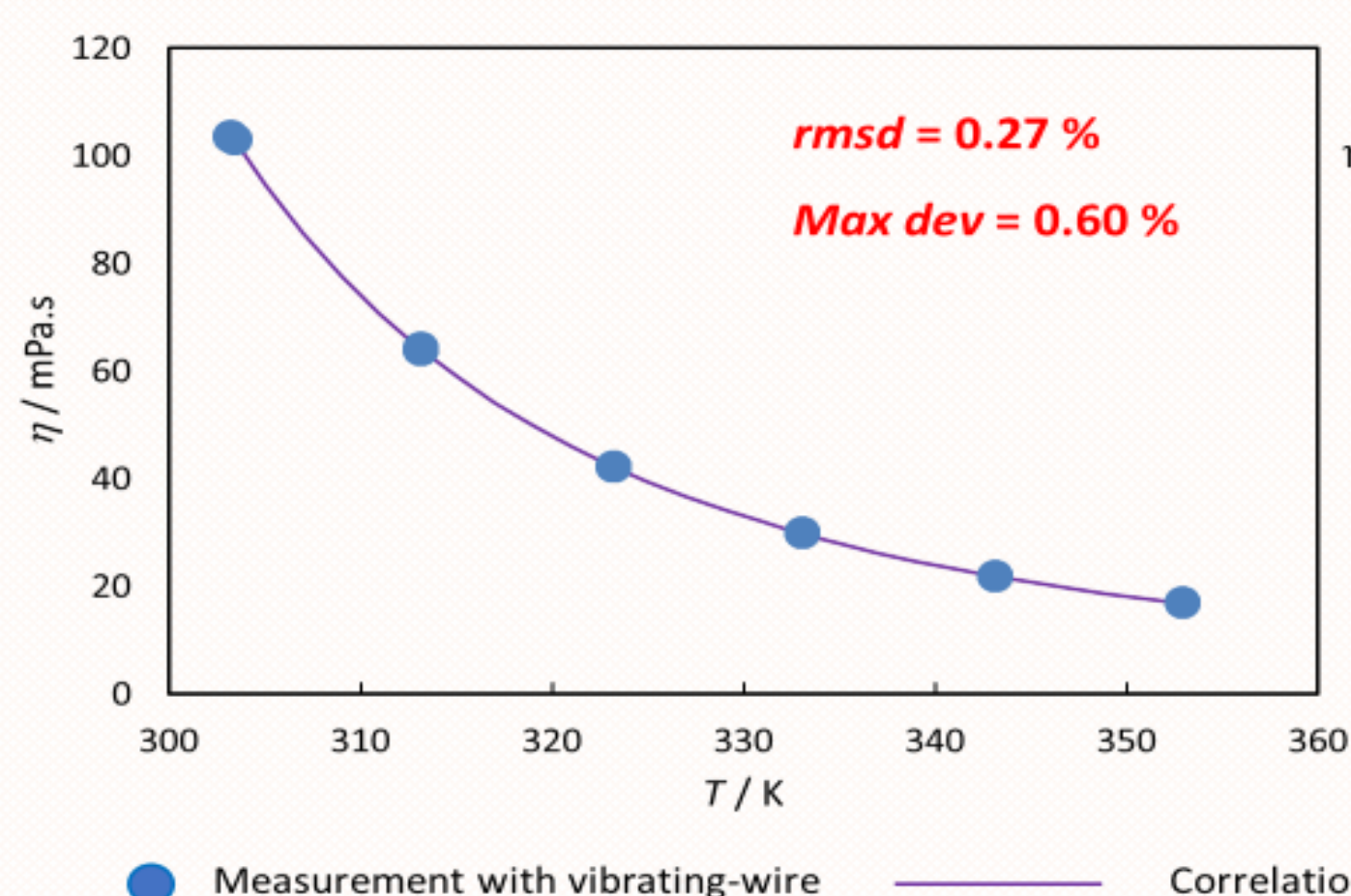
K and α - Mark-Houwink parameters

M - Molar mass = 603 g/mol

7

Viscosity of PEG 600

Vogel Correlation



rmsd = 0.27 %
Max dev = 0.60 %

$$\eta = \exp\left(-1.25334 + \frac{652.8098}{-192.511 + T}\right)$$

Only vibrating-wire viscosity measurements data were used in the correlation

Deviations of the Ubbelohde capillary from the correlation: ±0.35%

4

Conclusions

- The capillary measurements agree very well with vibrating-wire measurements
- PEG 600 has a **Surface Tension** between that of water and oils
- PEG 600 has a **Newtonian Behaviour** up to very high shear rate (up to ca. 1200 s⁻¹)
- The Gel Permeation Chromatography (Size Exclusion Chromatography) and Mark-Houwink equation present similar results – **Molar Mass**

Future Work

To build a correlation based on the relationship between molecular weight distribution of PEG and their Thermophysical Properties

- Viscosity
- Density

8

Acknowledgements and Funding

This work was supported by the Strategic Project PEst-OE/QUI/UI0100/2013 funded by Fundação para a Ciência e a Tecnologia (FCT, Portugal).